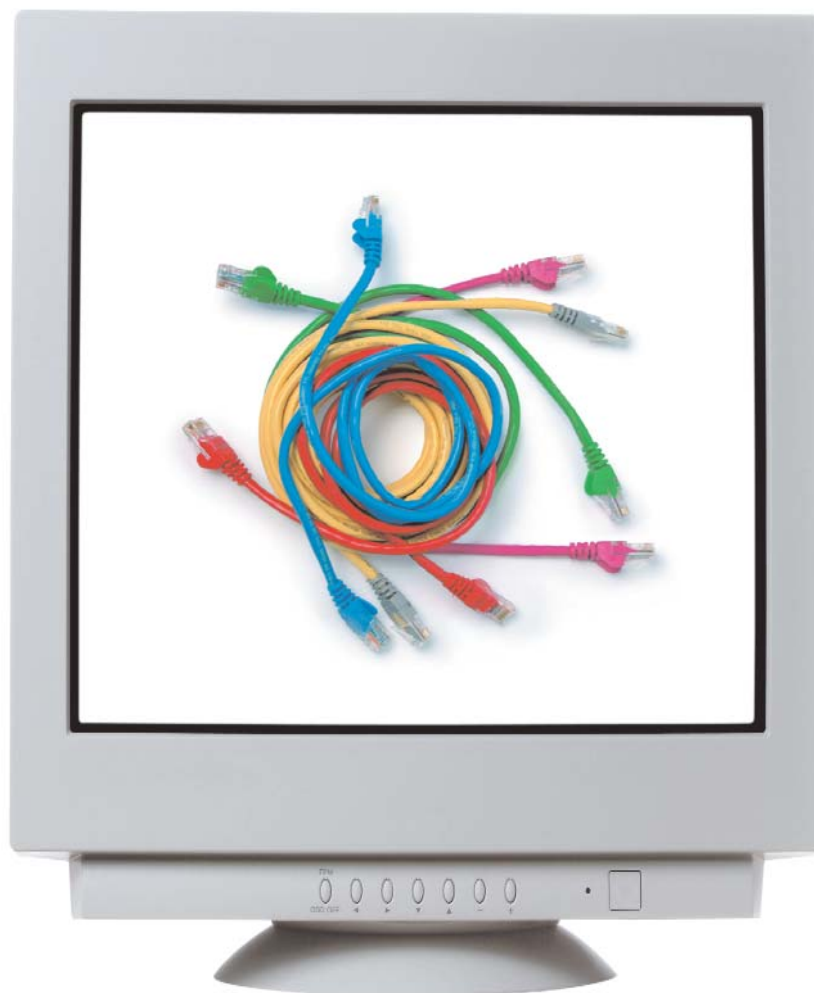


A Centre's guide to SmartScreen.co.uk



Diploma in Communication Systems Level 3 (3662)

A Centre's guide to Communication Systems Level 3 (3662) qualification on SmartScreen

SmartScreen currently provides over 80,000 pages of dedicated online support materials for tutors, assessors and learners of more than 140 City & Guilds qualifications.

How can SmartScreen help me?

Support materials are available for the Communication Systems L3 (3662) Diploma on SmartScreen.

Units supported:

Unit 301, 302 and 303.

Support for each unit includes:

- scheme of work
- sample lesson plans
- individual learning plans
- worksheets
- activities
- practice question paper
- recommended teaching materials and resources.

Other support material includes:

- career progression chart
- levels chart
- FAQs
- tutor fourm
- 'at work' and 'study skills' section
- recommended resources
- career and funding advice, and case studies
- qualification information, overview and structure.

SmartScreen is constantly evolving with new content and services being added for tutors and learners throughout the lifespan of your subscription.

Why choose SmartScreen?

- **Shake learning up** - offers flexibility in lesson delivery and learning styles.

- **Engage and motivate** - learning via game like activities and visual resources will help inject the fun back into learning. You may even notice an increase in retention levels.

- **Learn on the go and outside the classroom** – with an internet connection learners can access the resources at anytime even on their mobiles.

- **24 hour support network** – the tutor forums are a great way to request information and advice, as well as gain access to an expert. SmartScreen also offers free forums from time to time, including Functional Skills and Foundation Learning support forums.

- **Stay on top** – our resources will help your tutors and learners achieve qualification success. Centres often tell us that our resources help them achieve their ILT/ECT targets.

- **Do what you do best** – our lessons plans, handouts and worksheets will save tutors time, meaning that they can spend their valuable time doing what they do best...teaching!

Try before you buy...

Take 20 minutes to let us show you all the material available to - you won't even need to leave your desk. Find out more at www.SmartScreen.co.uk/webconferencing.

How do I subscribe?

For only £250 all your tutors and learners will gain access to the resources regardless of numbers.

3 easy ways to subscribe:

- Visit: www.walled-garden.com. Once logged in, enter **SS3662** in the search field. SmartScreen resources will appear in the search results.

- Email: directsales@cityandguilds.com

- Call: **0844 543 000**

Key points

- Unique in the FE market
- One centralised resource
- Unlimited tutor and learner logins
- Qualification and level specific
- Great value for money

Every effort has been made to ensure that the information contained in this publication is true and correct at time of going to press. However, City & Guilds' products and services are subject to continuous development and improvement and the right is reserved to change products and services from time to time. City & Guilds cannot accept responsibility for any loss or damage arising from the use of information in this publication.

©2010 The City and Guilds of London Institute. All rights reserved.

City & Guilds is a trademark of the City and Guilds of London Institute.

City & Guilds is a registered charity (charity number 312832) established to promote education and training.

City & Guilds

Learning Solutions

1 Giltspur Street

London EC1A 9DD

T 020 7294 3435

F 020 7294 3414

subscribe@smartscreen.co.uk

www.smartscreen.co.uk